



Production Range



## THINKING AHEAD

1804. The Dillinger Hütte steel mill rolls its first steel plate. In 1845, a company which later became part of Mannesmannröhren-Werke produced continental Europe's first welded steel pipe. In 1991, these two steel industry pioneers – AG der Dillinger Hüttenwerke and Mannesmannröhren-Werke AG – decide to pool their experience and know-how and create EUROPIPE.

Our rich heritage in terms of steel technology and manufacturing expertise plus the dedication and hard work of our people enabled us to achieve some very demanding objectives.

Today we are the world-market leader in large-diameter pipe production for the oil and gas sector.

Supplying products and services for pipeline construction, EUROPIPE today leads an industry that takes "thinking big" literally: A 1.5 million kilometre network of pipelines spans the globe, conveying gases and liquids with maximum safety and the utmost respect for the environment.

With five mills in Europe, the USA and Brazil, producing annually over 3,000 kilometres of large-diameter pipe for pipeline projects throughout the world: onshore and offshore, in the arctic ice, the depths of the world's oceans and in the desert heat.

Our success is based on a simple principle: thinking ahead. Each and every one of our employees is committed to the philosophy of anticipating customer needs to make our products, processes and services even better. The ability to think ahead – this is the pledge of top performance with which we approach every challenge. Our products are the precondition for solutions tailored to our customers' requirements.

Oil, natural gas and coal, the world's most important sources of energy, are rarely found where they are needed. 75% of the world's natural gas is transported through pipelines.



EUROPIPE offers a broad range of products for the oil and gas market. Longitudinally welded line pipe is available in diameters from 508 to 1,524 mm (20" to 60") and wall thicknesses from 7 to 40 mm (0.275" to 1.574") and in lengths of up to 18.3 metres (60 ft).

For effective corrosion protection we have developed various coating systems which ensure that our welded pipes can withstand the toughest demands – onshore or offshore.



## THE DIMENSIONS OF EUROPIPE

EUROPIPE has production sites at several locations in Europe and the Americas. We operate a total of four high performance longitudinal weld pipe production lines: our 18-metre line in Mülheim an der Ruhr, Germany, and our 12-metre line in Dunkerque, France, use the UOE process, while our 12-metre lines in Mülheim an der Ruhr and at **Berg Steel Pipe (BSPC)**, Panama City/FL, USA, produce pipe by the three-roll bending method. **Tubos Soldados Atlântico (TSA)** in Serra/Espirito

Santo, Brazil, supplies helically welded line pipe. **Berg Spiral Pipe (BSPM)** as well produces helically welded pipe in Mobile/AL, USA.

EUROPIPE is the partner of choice when it comes to natural gas pipe arrays, special structural pipe, e.g. for tendons, piling walls including tubular piles, conductor pipe, and much more.

### LONGITUDINALLY WELDED LARGE-DIAMETER LINE PIPE

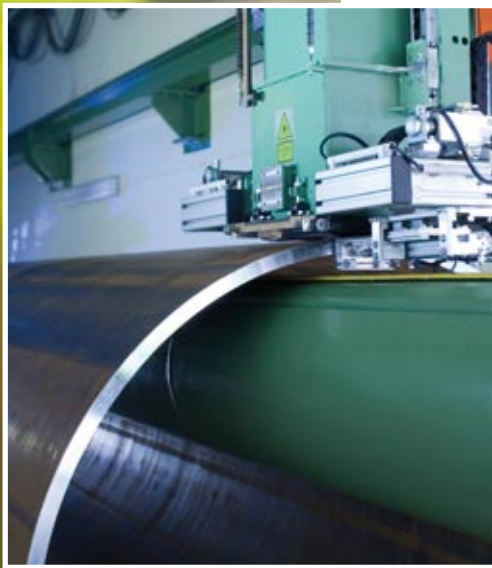
OUTSIDE DIAMETER	Grade	inch	20	22	24	26	28	30	32	34	36	
		mm	508	559	610	660	711	762	813	864	914	
WALL THICKNESS	≤ X52 L360	min.	0.276	0.276	0.276	0.276	0.276	0.276	0.276	0.276	0.276	0.276
		max.	1.157	1.157	1.260	1.575	1.575	1.575	1.575	1.575	1.575	1.575
		min.	7.0	7.0	7.0	7.0	7.0	7.0	7.0	7.0	7.0	7.0
		max.	29.4	29.4	32.0	40.0	40.0	40.0	40.0	40.0	40.0	40.0
	≤ X56 L390	min.	0.276	0.276	0.276	0.276	0.276	0.276	0.276	0.276	0.276	0.276
		max.	1.157	1.157	1.260	1.488	1.575	1.575	1.575	1.575	1.575	1.575
		min.	7.0	7.0	7.0	7.0	7.0	7.0	7.0	7.0	7.0	7.0
		max.	29.4	29.4	32.0	37.8	40.0	40.0	40.0	40.0	40.0	40.0
	≤ X60 L415	min.	0.276	0.276	0.276	0.276	0.276	0.276	0.276	0.276	0.276	0.276
		max.	1.157	1.157	1.260	1.390	1.500	1.575	1.575	1.575	1.575	1.575
		min.	7.0	7.0	7.0	7.0	7.0	7.0	7.0	7.0	7.0	7.0
		max.	29.4	29.4	32.0	35.3	38.1	40.0	40.0	40.0	40.0	40.0
	≤ X65 L450	min.	0.276	0.276	0.276	0.276	0.276	0.276	0.276	0.276	0.276	0.276
		max.	1.157	1.157	1.260	1.284	1.382	1.480	1.575	1.575	1.575	1.575
		min.	7.0	7.0	7.0	7.0	7.0	7.0	7.0	7.0	7.0	7.0
		max.	29.4	29.4	32.0	32.6	35.1	37.6	40.0	40.0	40.0	40.0
	≤ X70 L485	min.	0.276	0.276	0.276	0.276	0.276	0.276	0.276	0.276	0.276	0.276
		max.	1.157	1.157	1.106	1.193	1.284	1.374	1.469	1.567	1.567	1.575
		min.	7.0	7.0	7.0	7.0	7.0	7.0	7.0	7.0	7.0	7.0
		max.	29.4	29.4	28.1	30.3	32.6	34.9	37.3	39.8	39.8	40.0
	≤ X80 L555	min.	0.394	0.394	0.394	0.394	0.394	0.394	0.394	0.394	0.394	0.394
		max.	0.941	0.795	0.965	1.043	1.122	1.205	1.284	1.284	1.284	1.284
		min.	10.0	10.0	10.0	10.0	10.0	10.0	10.0	10.0	10.0	10.0
		max.	23.9	20.2	24.5	26.5	28.5	30.6	32.6	32.6	32.6	32.6

Other dimensions and products for oil and gas line pipes are available on request.

For more product information, please visit: [www.europipe.com](http://www.europipe.com)



<b>Grade</b>	<b>inch</b> <b>mm</b>	<b>38</b> <b>965</b>	<b>40</b> <b>1,016</b>	<b>42</b> <b>1,067</b>	<b>44</b> <b>1,118</b>	<b>46</b> <b>1,168</b>	<b>48</b> <b>1,219</b>	<b>52</b> <b>1,321</b>	<b>56</b> <b>1,422</b>	<b>60</b> <b>1,524</b>
≤ X52 L360	min.	0.276	0.276	0.276	0.276	0.276	0.276	0.276	0.449	0.480
	max.	1.575	1.575	1.575	1.575	1.575	1.575	1.559	1.441	1.339
	min.	7.0	7.0	7.0	7.0	7.0	7.0	7.0	11.4	12.2
	max.	40.0	40.0	40.0	40.0	40.0	40.0	39.6	36.6	34.0
≤ X56 L390	min.	0.276	0.276	0.276	0.276	0.276	0.276	0.276	0.386	0.480
	max.	1.575	1.575	1.575	1.575	1.575	1.575	1.559	1.441	1.339
	min.	7.0	7.0	7.0	7.0	7.0	7.0	7.0	9.8	12.2
	max.	40.0	40.0	40.0	40.0	40.0	40.0	39.6	36.6	34.0
≤ X60 L415	min.	0.276	0.276	0.276	0.276	0.276	0.276	0.276	0.433	0.480
	max.	1.575	1.575	1.575	1.575	1.575	1.575	1.559	1.441	1.339
	min.	7.0	7.0	7.0	7.0	7.0	7.0	7.0	11.0	12.2
	max.	40.0	40.0	40.0	40.0	40.0	40.0	39.6	36.6	34.0
≤ X65 L450	min.	0.276	0.276	0.276	0.276	0.276	0.276	0.276	0.433	0.480
	max.	1.575	1.575	1.575	1.575	1.575	1.575	1.532	1.421	1.327
	min.	7.0	7.0	7.0	7.0	7.0	7.0	7.0	11.0	12.2
	max.	40.0	40.0	40.0	40.0	40.0	40.0	38.9	36.1	33.7
≤ X70 L485	min.	0.276	0.315	0.315	0.315	0.315	0.315	0.417	0.449	0.480
	max.	1.575	1.575	1.575	1.575	1.575	1.543	1.425	1.323	1.232
	min.	7.0	8.0	8.0	8.0	8.0	8.0	10.6	11.4	12.2
	max.	40.0	40.0	40.0	40.0	40.0	39.2	36.2	33.6	31.3
≤ X80 L555	min.	0.394	0.394	0.394	0.394	0.394	0.394	0.394	0.449	0.480
	max.	1.307	1.307	1.307	1.307	1.307	1.284	1.244	1.158	1.079
	min.	10.0	10.0	10.0	10.0	10.0	10.0	10.0	11.4	12.2
	max.	33.2	33.2	33.2	33.2	33.2	32.6	31.6	29.4	27.4



## PROACTIVE APPROACHES

Our world is changing all the time. As political and social shifts create new markets, demand for high-performance pipelines is growing worldwide. EUROPIPE's philosophy is not to sit back and wait but to play an active part in these new markets. That is why we are continually improving our services while developing new and enhanced products.

**High-strength pipe:**  
Grade X80 to X100

**HIC-resistant pipe:**  
All grades up to X70

**Collapse-resistant pipe:**  
Optimised geometry and grades

Our quality management system is based on a modified EFQM model and on ISO 9001. This means that all processes at all sites are planned, controlled, implemented and documented

in accordance with binding rules and can be verified at all times. Improvements are initiated and carried out on the basis of objective measurements, audits and self-assessments.

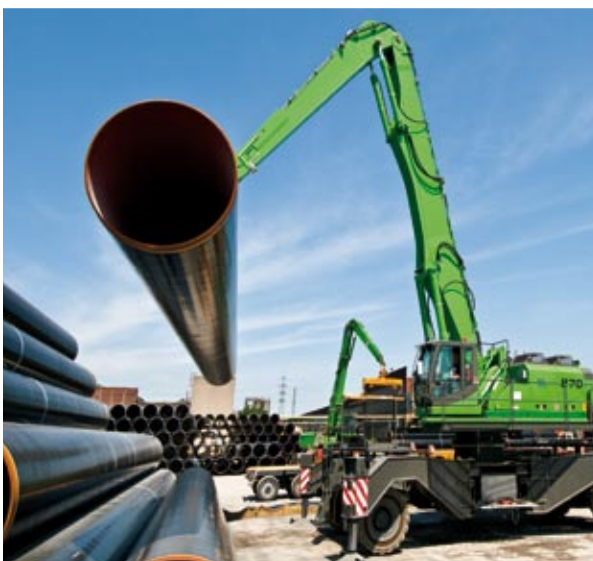
Constant customer support before, during and after order processing guarantees that we can respond to customer needs with maximum flexibility. This process is monitored by way of individual customer satisfaction surveys.

We use market analyses to support development and refinement of new products – by which we mean more than just pipe. Together with our partners, we mastermind optimised solutions at every link in the value chain, from steel to laid (insulated) pipe. Both now and in the future, EUROPIPE is committed to offering its customers not just excellent products but also superior services.

This includes advice on all commercial, technical and logistical issues as well as expert research and development backup. Plus the ability, if required, to deliver not just the bare pipe but a fully insulated product, complete with accessories, right to where it is needed.

Our high-performance coating subsidiaries are MÜLHEIM PIPECOATINGS GmbH, Germany and eb Pipe Coating Inc., USA. Some of our coating experts have experience in pipeline corrosion protection dating back more than a quarter of a century.

In short, EUROPIPE is a powerhouse of expertise that will continue to hone its leading edge well into the 21st century.



EUROPIPE GmbH

P.O. Box 100504  
45405 Mülheim an der Ruhr  
Germany

Pilgerstraße 2  
45473 Mülheim an der Ruhr  
Germany

Phone +49 208 976-0

Fax +49 208 976-30 00

[www.europipe.com](http://www.europipe.com)